

OCT 2011 / VOL 101 NO 10
US \$7 CAN \$9

LANDSCAPE ARCHITECTURE MAGAZINE

THE MAGAZINE OF THE AMERICAN
SOCIETY OF LANDSCAPE ARCHITECTS

HERE WE GROW AGAIN



THE 2011 ASLA AWARDS

THE STUDENTS

No problem too large

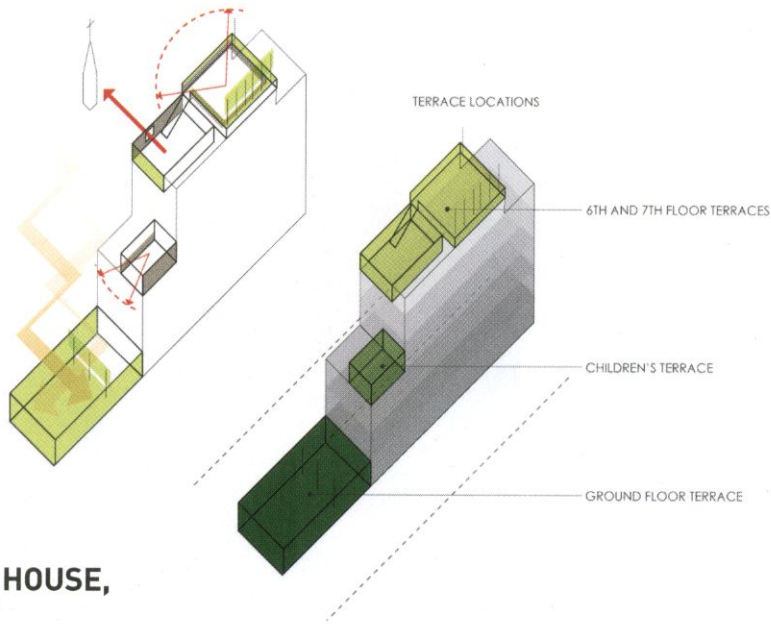
THE PROS

Cities win big

THE LANDMARK AWARD

What the San Diego River says today

LIGHT, VIEWS AND SPATIAL DEFINITION



HONOR AWARD

CARNEGIE HILL HOUSE, NEW YORK CITY

In a flight of poetry, the designers ask us to imagine this Manhattan town house as a nest: it provides respite for a family with young children and for migratory songbirds in a dense urban grid. Not hard to imagine at all—thanks to a series of terraced outdoor spaces, painstakingly unified with plants and materials, and a keen sense of scale and detail.

Each of four intimate terraces plays a different role. The ground floor is a lush five-sided space that gets light from above and creates an extension of the house's primary living space. Woodland understory plants (*Leucothoe*, ostrich ferns, ladyferns) carpet the garden floor, Boston ivy climbs the wall, and ginkgoes frame the view from indoors. Just above, the children's terrace offers private play space, with a slate chalkboard built into a teak slat screen. Two upper terraces are on top of the town house. Teak screening, built of slats stacked like a bird's nest, edits views of the surrounding urban scene. A nearby green wall is both artwork and a laboratory for testing plants that work well there—currently, *Anthurium*, *Gaultheria*, and *Iberis*. Meadow grasses and perennials echo Central Park, not far away.

The jury exclaimed, "What a wonderful home for a family. It's astonishing how much vegetation they packed in."

NELSON BYRD WOLTZ LANDSCAPE ARCHITECTS,
CHARLOTTESVILLE, VIRGINIA

